

# Hophornbeam Copperleaf Management

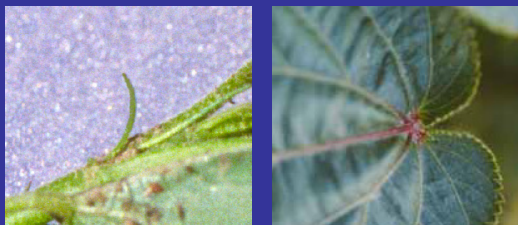
## ◆ Identification *Is the First Step*

### ◆ Leaf Margins



Leaf serration is more coarse on prickly sida than hophornbeam copperleaf.

### ◆ Stems & Petioles



Spiny stipule at the base of the petiole on prickly sida. Hophornbeam copperleaf has purple coloration where the main leaf veins meet the petiole.

### ◆ Inflorescence



**Prickly sida**  
Five petal yellow  
flowers in leaf axils



**Hophornbeam  
Copperleaf**  
White axillary and  
terminal spike flowers

### ◆ Seedlings



**Prickly sida**  
One true leaf  
immediately after  
cotyledon expansion



**Hophornbeam  
Copperleaf**  
Two true leaves  
immediately after  
cotyledon expansion

### ◆ Seeds



**Prickly sida**

**Hophornbeam  
copperleaf**

### ◆ Management

- ✓ Hophornbeam copperleaf emergence extends late into the growing season
- ✓ Soil-applied herbicides should be applied within two weeks of planting
- ✓ Postemergence herbicides should be applied before copperleaf exceeds four to six inches in height
- ✓ Effective soil-applied soybean herbicides include products containing sulfentrazone, flumioxazin, metribuzin, or cloransulam
- ✓ Effective postemergence soybean herbicides include products containing acifluorfen, lactofen, fomesafen, or glyphosate



UNIVERSITY OF ILLINOIS  
**EXTENSION**

College of Agricultural, Consumer and Environmental Sciences



**Illinois Soybean Checkoff Board**